

**U.S. Army Corps of Engineers
Fiscal Year 2021
Handshake Program Application**

Please review instructions before completing application!

Corps Lake/River Project Name: **Philpott Lake**
District / Division:**SAW/SAD**
Handshake Proposal Title: **Philpott Dam River Access Improvements**
Corps POC Name:**Mary Lawson**
Telephone: **(276) 629 - 4512 ext. 8227**
E-Mail: **mary.c.lawson@usace.army.mil**

A. Checklist:

1. Will the Handshake funds be spent on Corps facilities and resources that are being fully maintained by the Corps? (not in outgranted parks) Yes No
 2. Will the Challenge Partnership agreement be with a non-federal public or private entity(ies)? Yes No
 3. Is the proposed activity within current authorities and contained in the annual or 5-year work plan in the approved lake project OMP? Yes No
 4. Have all of the NEPA requirements been considered for this project? Yes No
 5. I am aware the Challenge Partnership Agreement must be reviewed and Approved by District Office of Counsel before sending to HQUSACE. Yes No
 6. If the full funding amount requested is not available, could a portion of this Handshake Project be completed with partial funding? Yes No
 7. I am aware that all government funds must be spent in accordance with FAR, DFAR and AFAR contracting laws and regulations, and that Handshake funds cannot be provided to the partner(s). Yes No
 8. Did you participate in a Handshake Webinar in 2019 or review a 2019 Handshake Webinar on the Gateway? Yes No
-

B. Handshake Funding Request (maximum \$25,000): \$10,000

C. Incentive Points Category: Check the appropriate box if your application qualifies to receive bonus points on the evaluation score.

- This project will be completed with a national MOU partner with which the Lake or Project hasn't previously partnered. (100 points).
- This project reduces O&M cost to the Corps over the lifecycle of the proposed project or improves existing infrastructure. (100 points).

D. Describe your partnership and the proposed Handshake Partnership Project:

Project applications will be evaluated on the categories below. Please complete each section as appropriate.

Summary Statement:

The USACE manages parks known as the Henry County Tailrace and the Franklin County Tailrace on each side of the Smith River immediately downstream of Philpott Dam. Visitors to these areas can access the river and launch non-motorized paddle craft. The proposed project will make improvements to the launch ramps in these areas which will benefit visitors and stakeholders. On the Henry County side improvements will include a paddle craft launch slide, repair of erosion on the ramp with rip rap and gravel, and the addition of drainage features. On the Franklin County side improvements will include addition of rip rap and gravel to repair erosion on the ramp and improve the parking area. USACE will partner with the Dan River Basin Association (DRBA) and the Henry County Parks and Recreation (HCP&R). USACE will oversee the project, purchase materials, and provide a dump truck to haul rock. DRBA will contribute professional services for design of the canoe slide, coordination with HCP&R on project specifications, and coordination of volunteers to spread gravel and install canoe slide. HCP&R will contribute engineering design for project as well as personnel and equipment to haul rock. If only partial funds are received, improvements could be limited to only one side of the river or parking lot improvements could be delayed until other funding becomes available.

Handshake Funding Cost Break Down:

\$10,000 in Handshake Funding requested:

- \$7000 - riprap and gravel
- \$3000 - paddlecraft launch slide

Longevity / O&M description:

The river access improvements are necessary to ensure the longevity and sustainability of the facilities as use increases. Eroding areas will be stabilized and hardened which will reduce O&M costs over time and help prevent degradation of water quality and habitat downstream. The launch slide is made of durable metal which is designed to last well into the future.

Partnership Value:

This project will enhance the successful relationships USACE has with DRBA and HCP&R. DRBA has a Cooperative Association Agreement with Philpott Lake and has contributed to many initiatives including development of the Philpott Trail System, litter pickups, educational programs, and the 2014 Handshake Partnership Project to establish the Philpott Lake Blueway. HCP&R manages the Philpott Marina and Group Campground recreation lease area and has also assisted with the trail improvements and contributed to the Blueway project. This partnership would further solidify each partners' commitment to provide recreational opportunities for the community to improve quality of life, health and safety, and support eco-tourism adding value to the region well into the future.

Recreational Benefit:

These river access points are key infrastructure features of the Smith River Blueway, which has enhanced recreation based tourism by improving river access opportunities for paddlers, anglers, boaters, photographers, hikers and wildlife enthusiasts. The paddling community has expanded in the area with the creation of the Smith River Blueway and the efforts in Henry County to generate eco-tourism. These access improvements are needed in order to meet the rising demands of recreational users and to provide safe entry on the Smith River. A naturalized Brown trout population and stocked Rainbow and Brook trout population attract many visitors to the area including fishing guides and boat rental business. The improved access will meet the needs of users launching drift boats and fishing rafts which is difficult at this time due to the lack of suitable ramps.

Environmental Stewardship Value:

The much needed improvements will benefit the environment by addressing erosion issues and helping prevent degradation of water quality and habitat for macroinvertebrates and fish downstream. The access points also provide the necessary infrastructure for the public to enjoy safe paddling and fishing on the river, which motivates people to get involved in protecting the environment and to become better stewards of natural resources. The project will provide safer and more efficient access for volunteer trash removal events held bi-annually on the

Smith River and for students participating in water quality monitoring and the award-winning Trout in the Classroom program.

Communication & Education Value:

As part of a well-planned network of river accesses and trails, this project will contribute to historical, cultural, and environmental education opportunities for the community. Signage at each access provides river users with maps, downstream access locations, safety tips, and other information. The improvements will increase safe use of the ramps, exposing more visitors to this educational information. The access ramps facilitate opportunities for students and volunteers to participate in educational programs including Trout-in-the-Classroom, Streamside-Trees-in-the-Classroom, and Citizens Water Quality Monitoring programs.

Innovativeness:

Philpott Lake is lacking in infrastructure for paddle craft user groups. Steps have been taken to meet the growing demand through the development of blueway maps and water trail signage. This project will be the first to improve facilities in order to make launching paddle craft easier and safer. Paddle sports have been steadily increasing in the area due to the excellent initiative by DRBA and Henry County. River access points have been created and guide maps published to share information with river users. This access improvement project will further enhance this initiative and will be the first of its kind at Philpott Lake.

Conclusion:

Access to the river is in high demand due to the growing popularity of paddle sports and guided fishing. This project will provide reliable access for multiple user groups including paddlers, anglers, boaters, photographers, hikers, and wildlife enthusiasts. The project will also enhance community safety by providing better access for swift water rescue responders.

Double click on spreadsheet to access data entry fields and to enter Partner names.

You MUST enter partner names into the spreadsheet:

	Local Corps Office	Handshake Funds	DRBA	HCP&R		
Salaries	\$2,000	N/A	\$1,000	\$1,000	\$0	\$0
Travel	\$0	N/A	\$0	\$0	\$0	\$0
Materials and Supplies	\$0	\$10,000	\$0	\$0	\$0	\$0
Equipment Use	\$1,500	\$0	\$0	\$5,000	\$0	\$0
Funds Contributed	N/A	N/A	\$0	\$0	\$0	\$0
Personal Property	N/A	N/A	\$0	\$0	\$0	\$0
Volunteer	N/A	N/A	\$650	\$0	\$0	\$0
In-Kind Services	N/A	N/A	\$0	\$0	\$0	\$0
Other (explain below)	\$0	\$0	\$0	\$0	\$0	\$0
Total	\$3,500	\$10,000	\$1,650	\$6,000	\$0	\$0
Share of Total Cost	16.5%	47.3%	7.8%	28.4%	0.0%	0.0%
	63.8%					

	Partner 5	Partner 6	Partner 7	Partner 8	Partner 9	Partner 10
Salaries	\$0	\$0	\$0	\$0	\$0	\$0
Travel	\$0	\$0	\$0	\$0	\$0	\$0
Materials and Supplies	\$0	\$0	\$0	\$0	\$0	\$0
Equipment Use	\$0	\$0	\$0	\$0	\$0	\$0
Funds Contributed	\$0	\$0	\$0	\$0	\$0	\$0
Personal Property	\$0	\$0	\$0	\$0	\$0	\$0
Volunteer	\$0	\$0	\$0	\$0	\$0	\$0
In-Kind Services	\$0	\$0	\$0	\$0	\$0	\$0
Other (explain below)	\$0	\$0	\$0	\$0	\$0	\$0
Total	\$0	\$0	\$0	\$0	\$0	\$0
Share of Total Cost	0.0%	0.0%	0.0%	0.0%	0.0%	0

	Partner 11	Partner 12	Partner 13	Partner 14	Partner 15	Total
Salaries	\$0	\$0	\$0	\$0	\$0	\$4,000
Travel	\$0	\$0	\$0	\$0	\$0	\$0
Materials and Supplies	\$0	\$0	\$0	\$0	\$0	\$10,000
Equipment Use	\$0	\$0	\$0	\$0	\$0	\$6,500
Funds Contributed	\$0	\$0	\$0	\$0	\$0	\$0
Personal Property	\$0	\$0	\$0	\$0	\$0	\$0
Volunteer	\$0	\$0	\$0	\$0	\$0	\$650
In-Kind Services	\$0	\$0	\$0	\$0	\$0	\$0
Other (explain below)	\$0	\$0	\$0	\$0	\$0	\$0
Total	\$0	\$0	\$0	\$0	\$0	\$21,150
Share of Total Cost	0.0%	0.0%	0.0%	0.0%	0.0%	100%

Explanations: USACE will oversee the project, purchase materials, and provide a dump truck to haul rock. DRBA will contribute professional services for design of the canoe slide, coordination with HCP&R on project specifications, and coordination of volunteers to spread gravel and install canoe slide. HCP&R will contribute engineering design for project as well as personnel and equipment to haul rock.

Smith River Blueway Map - excerpts



1. Philpott Dam Access - Henry County

740 Dam Spillway Rd. Bassett, Va

6.4 Miles to Bassett

2-3 Hours • Class I - III Rapids

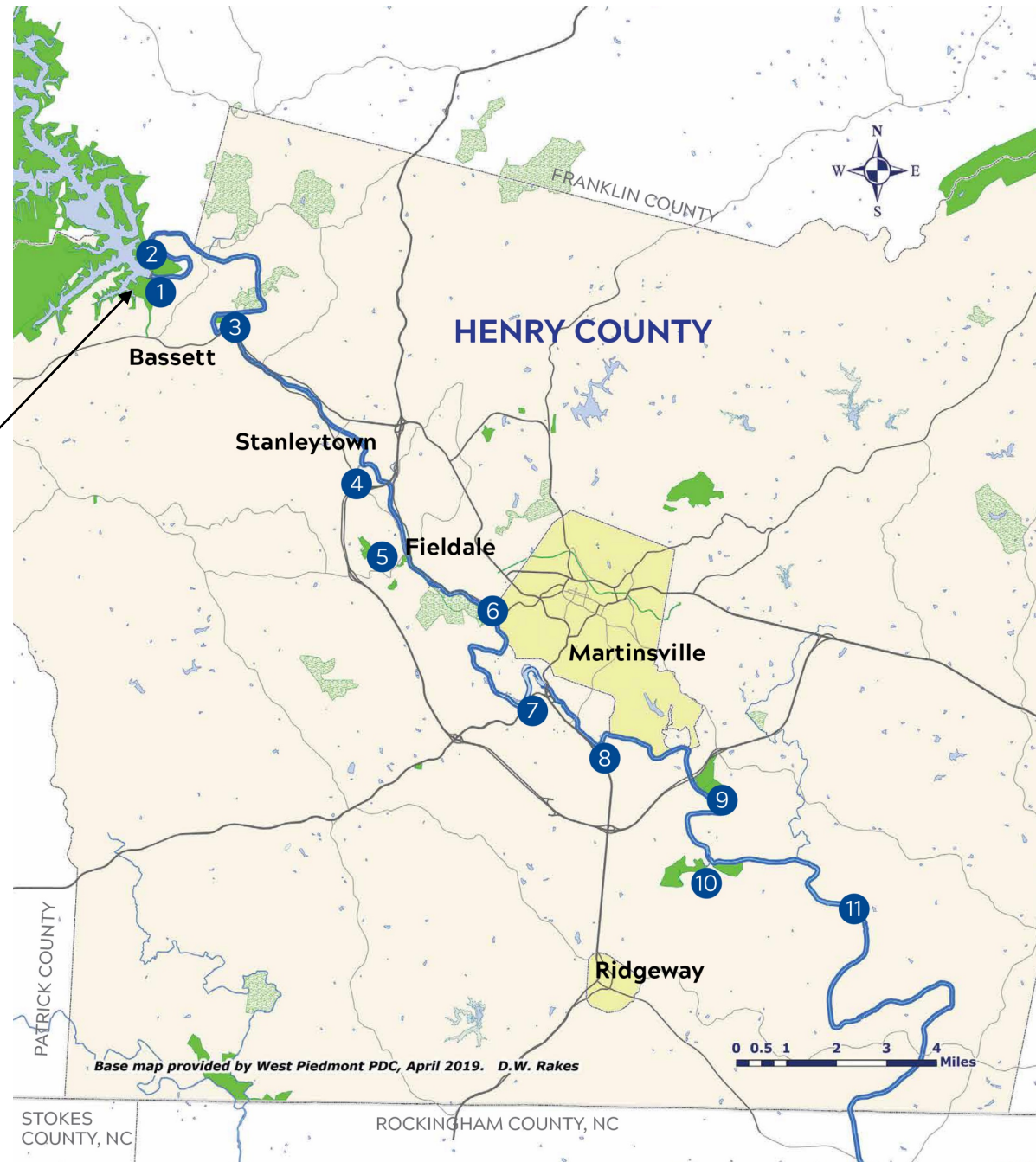
2. Philpott Dam Access - Franklin County

Riverbrook Rd. Henry, VA

6.4 Miles to Bassett

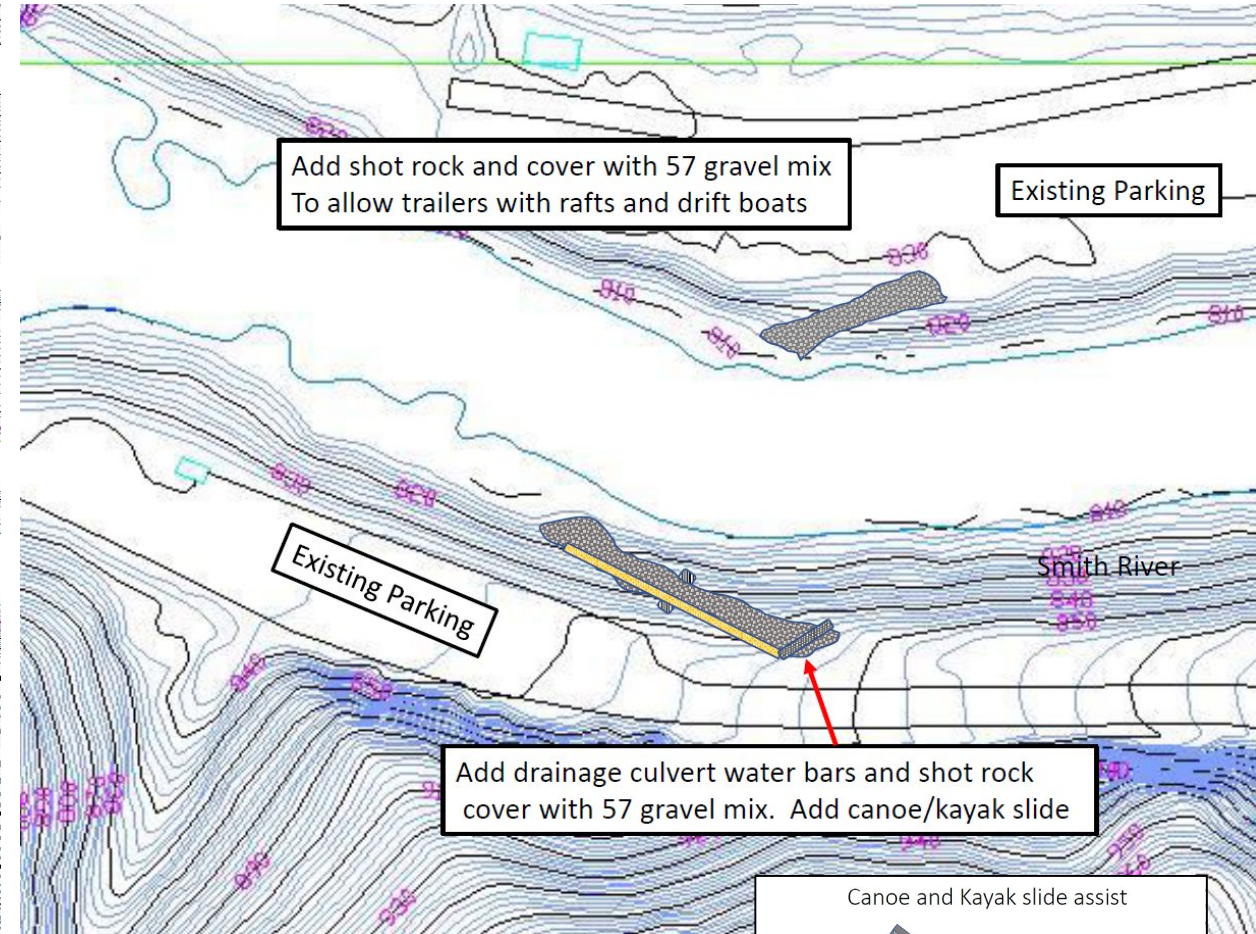
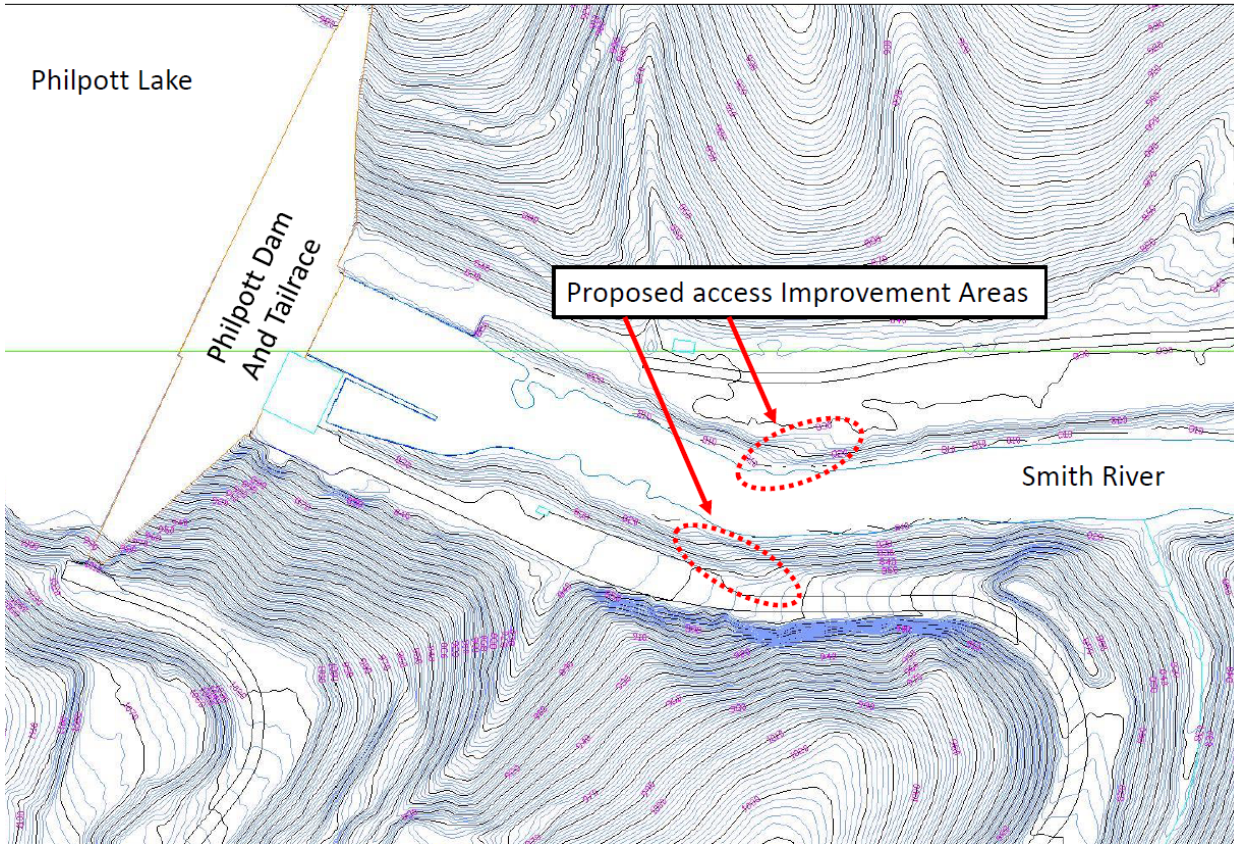
2 - 3 Hours • Class I - III Rapid

<https://www.smithriverblueway.com/>



Ramp Improvement Project Plan Sheets

Philpott Lake – Smith River Tailrace Area Access ramp Improvements - Page 1 of 3



USACE Philpott Lake - Henry County and Franklin County Tailrace Parks – Smith River access ramps



Henry County - Blueway Sign



Henry County - Access Ramp Entrance



Franklin County - Severe Erosion on Launch Ramp Adjacent to River



Franklin County - Erosion Exposing Large Rocks and Creating Very Uneven Ground



Henry County - Paddlers Launching Kayaks

USACE Philpott Lake – Letters of Support for Handshake Partnership



... protecting and promoting the Dan River Basin through education, recreation and stewardship.

October 4, 2020

To whom it may concern

The Dan River Basin Association (DRBA) would like to provide this letter of support for the Handshake Partnership Grant through the USACE for the Smith River Access ramp improvements at the Philpott Lake Project.

DRBA is a non-profit organization that promotes and preserves the natural and cultural resources of the Dan River watershed through education, recreation and stewardship projects. Our mission is to protect and promote the Dan River Basin and we are dedicated to improving the local economies in our region. DRBA has worked closely with the USACE Wilmington District on a variety of issues and mutually beneficial projects within our watershed.

Our staff and volunteers work together with the local municipalities of Henry and Franklin counties to protect our natural resources and enhance the region as a destination for business and tourists through implementation and management outdoor recreational infrastructure. We know first-hand how river access projects have enhanced our region's economic development and citizen engagement.

During this time of stress and uncertainty, our region has experienced an enormous increase in use of outdoor assets by both local citizens and those visiting from surrounding areas. This river access improvement project is part of our recently developed Smith River Blueway and will build upon this foundation of success by providing a safer and more accessible river experience.

We appreciate the opportunity to support this project and DRBA will provide the necessary staff time and resources, as appropriate to ensure the success of the Smith River Blueway access amp improvements at Philpott Lake.

Thank you for your consideration,

A handwritten signature in blue ink that reads "Brian Williams".

Brian Williams, Program Manager
bwilliams@danriver.org
Direct: (276) 618-1457



Phone: (276) 634-4640
Fax: (276) 634-4637
P.O. Box 7 · Collinsville, VA 24078

October 2, 2020

To whom it may concern:

I am writing to express support for the handshake partnership grant that the staff at Philpott Lake are seeking. My department as well as several other local recreational and environmental groups are also a partner on this project.

By having these groups partner on this project and contribute manpower and materials, grant dollars can be maximized and this project can achieve the most benefit. After many years of being behind the curve, outdoor recreation and specifically paddling on the Smith River has increased significantly over the last 10 years.

The two river access points that this project is seeking to enhance are part of the recently completed Smith River Blueway which has been a great source of information to visitors and has greatly enhanced their experience on the Smith River. These two access points are the first ones below the Philpott Dam and the much needed improvements will greatly increase the safety and ease of use to access the river at these locations.

Please contact me if you have any questions.

Sincerely,

A handwritten signature in blue ink that reads "Roger G. Adams".

Roger G. Adams, CPRP
Director